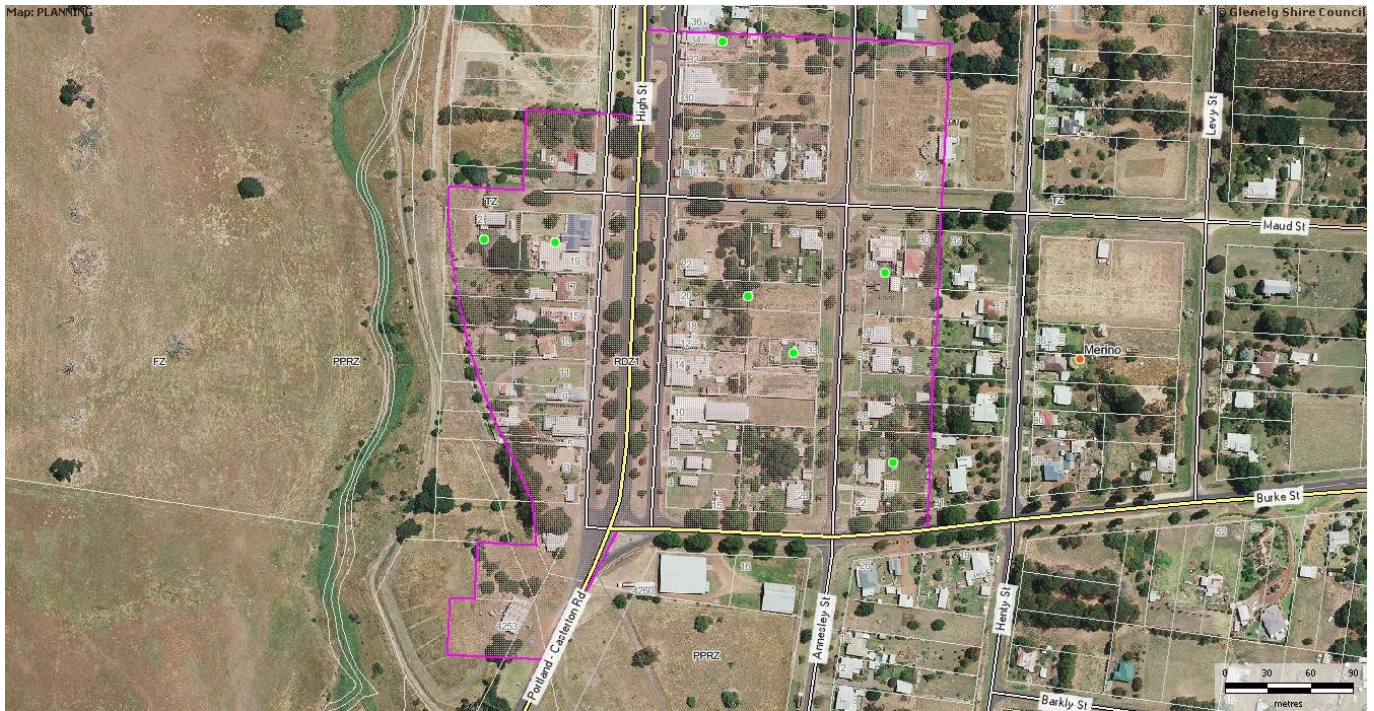


HERITAGE CITATION REPORT

Name MERINO TOWNSHIP **HO164**
Address High Street MERINO
Place Type Mixed Use Precinct
Citation Date 2013

Significance Level Local



Recommended VHR No HI No PS Yes
Heritage Protection

Description

Physical Description

The Township of Merino is located in a deep valley, adjacent to the Merino Creek, which once provided a reliable water source to the early inhabitants of the town. The creek has acted as a barrier to development to the north, and all subsequent development has occurred up the hill to the south of the town. The town is laid out in the standard grid pattern, with High Street being the main commercial and civic street. The main civic buildings are clustered together, the Court House (moved in from Digby in 1870), the Police Barracks (former), the Mechanics Institute and the Post Office all stand near the corner of Burke and High Streets. The streets running parallel to High Street, ascending up the slope of the hill contain most of the early residences, the school and the religious buildings. The industry of the town was also located in the centre, often adjacent to the creek. Unlike most towns of this size, Merino has a main carriageway running through the centre of the road reserve, with service roads on both sides, and plantings between the main and service roads. These are mainly part of the World War One Avenue of Honour, which are supported by the war memorial, located in the centre of the

HERITAGE CITATION REPORT

town on the corner of Maud and High Streets. The churches are located high on the hill overlooking the town, and are outside of this precinct.

The contributory and significant elements within this precinct are:

CONTRIBUTORY PLACES -

- . Timber shop and residence, 13 Maud Street, Merino
- . Timber House, 20 Maud Street, Merino
- . Timber House, 21 Maud Street, Merino
- . Timber House, 30 Maud Street, Merino
- . Timber House, 28 Annesley Street, Merino
- . Timber House, 33 Annesley Street, Merino
- . Timber House, 40 Annesley Street, Merino
- . Timber House, 60 Henty Street, Merino
- . Hills Garage, 4253 Portland-Casterton Rd, Merino
- . Shop (former) and residence, Lot 1, TP545557, Portland-Casterton Rd, Merino
- . Brick Shop, 5 High Street, Merino
- . Brick Shop and Residence, 7 High Street, Merino
- . Shop and Residence, 9 High Street, Merino
- . Shop, 12 High Street, Merino
- . Shop, 18 High Street, Merino
- . Wilson Lodge, 13 High Street, Merino
- . Bakery and Confectionary Shops and outbuildings, 14 High Street, Merino
- . Pair of Shops, and single fronted metal tile shop, 15 High Street, Merino
- . Timber Shop, 32 High Street, Merino
- . Brick Shop, 34 High Street, Merino

SIGNIFICANT PLACES -

- . Avenue of Honour, High Street median strip, Merino
- . Flour Mill (former) and *Quercus robur* (English Oak), 2 Maud Street, Merino
- . Bank of Victoria (former), 5 Maud Street, Merino
- . Catholic Church and land, 29 Maud Street, Merino
- . Timber House, garden and fence, 23 Annesley Street, Merino
- . Merino Court House, 4 High Street, Merino
- . Merino Post Office (former), 8 High Street, Merino
- . Merino Public Hall, 10 High Street, Merino
- . Brick Cottage and garden, 20 High Street, Merino
- . Merino Hotel, 30 High Street, Merino

Physical Condition

Very Good

Usage / Former Usage

Continues as a township

HERITAGE CITATION REPORT

Recommended Management

Protect as a Heritage Overlay area under the Glenelg Planning Scheme.

Comparative Analysis

975 Heywood Commercial Precinct
977 Digby Village Precinct
979 Condah Township Precinct
1254 Casterton Commercial Precinct

Statement of Significance

What is significant?

The present township of Merino, located on the Portland -Casterton Road, dates from the early 1840s and appears to have pre-empted the closer settlement afforded by the Land Selection Acts by several years. The first buildings were Paddy Curtain's eating house, located on the banks of the Merino Creek and the waterholes to the north of the township. The plan of suburban allotments around in the Parish of Merino in 1855 shows only four sections laid out. A more detailed survey undertaken of the town in 1857, when the area was formally gazetted shows then allotments, many already sold, and only two permanent buildings on the land of F. Egan, on the southwest corner of Hare and High Streets. Interestingly, no reserves are set aside in the original survey, although the Catholic Church was granted land in 1861. The Merino Creek, which once provided a reliable water source to the early inhabitants of the town, has acted as a barrier to development to the west, and all subsequent development has occurred up the hill to the east of the town. The town is laid out in the standard grid pattern, with High Street being the main commercial and civic street. The main civic buildings are clustered together, the Court House (moved in from Digby in 1870), the Police Barracks (former), the Mechanics Institute and the Post Office all stand near the corner of Burke and High Streets. The streets running parallel to High Street, ascending up the slope of the hill contain most of the early residences, the school and the religious buildings. The industry of the town was also located in the centre, often adjacent to the creek, such as the brick Flour Mill, built in 1857. Unlike most towns of this size, Merino has a main carriageway running through the centre of the road reserve, with service roads on both sides, and plantings between the main and service roads. These are mainly part of the World War One Avenue of Honour, planted in 1932 to replace the street trees (*Radiata Pines*). They are supported by the war memorial, dating from 1918, located in the centre of the town on the corner of Maud and High Streets. The churches are located high on the hill overlooking the town, and are outside of this precinct. The town is in good condition and retains a good level of integrity.

How is it significant?

The Merino Heritage Precinct is of historic, cultural, social and architectural significance to the Glenelg Shire.

HERITAGE CITATION REPORT

Why is it significant?

The Merino Heritage Precinct is of historic significance as a township dating from the early 1840s, as one of the chain of small settlements between Portland and Casterton, which developed as the major centres in the area, and for representing the emergence of various aspects of agriculture, especially closer settlement, soldier settlement and dairying in the area. It is of social significance as the focus for the community's commerce, religion, education and recreation, roles that continue to the present. The architectural significance of the town lies in range of buildings constructed from local materials over a long period of time, ranging from the fine religious buildings through to the humble timber cottages which remain.

This information is provided for guidance only and does not supersede official documents, particularly the planning scheme. Planning controls should be verified by checking the relevant municipal planning scheme.