

## Example 2 Landscape Notes

### Landscape Notes

#### Soil Preparation

- Building material and weeds to be removed from the site
- Prior to planting a non-residual herbicide application if required
- Garden beds to be dug over
- Imported top soil to be incorporated (mixed) into the site soil
- Lawn areas to be hoed (rotary)

#### Lawns

- Lawns to be seeded with non-invasive grass species.
- Appropriate species include Queensland Blue-grass, Red Leg-grass, Weeping grass, Creeping Bent grass, Clustered Wallaby grass, Kentucky Blue-grass and Tall Fescue.
- Garden bed edge to define lawn areas adjacent to garden beds to be sourced from treated pine, recycled plastic, moulded concrete, plantation grown sugar gum or local stone.

#### Planting

- Trees to have wooden stakes with plastic tree guards
- All plants to be well grown and disease free
- Plants to be well-established and equal to best quality and size
- Trees to have a well developed straight stem and trunk calliper
- Shrubs to have a single leading shoot with buds and leaves
- Groundcovers to have a strong primary and developing secondary shoots
- Planting holes to be dug twice as wide as the pots. Holes to be deeper than the pot and backfilled and watered prior to planting.

- Plants to be thoroughly watered in
- Apply gypsum where necessary

#### Mulching

- Garden bed to be mulched with 100mm of renewable resource mulch ((eg Eucimulch), or pine or local common Eucalyptus.
- Mulch to be kept away from the base of plants
- All mulch to be free of weed material and pieces not to exceed 15mm.

#### Irrigation

- Minimise the requirement for irrigation by selecting drought tolerant plants
- Automatic watering system to comprise low volume drip systems.

#### Establishment Maintenance Program

- An Establishment Maintenance Program to apply for 24 months from completion of landscape works.

- Maintenance program shall comprise:

All plant material to be maintained in good condition

Maintain mulch to a depth no less than 50mm

Control all weed species in garden beds

Prune or remove dead or damaged branches to promote growth

Irrigate all garden beds and lawn areas

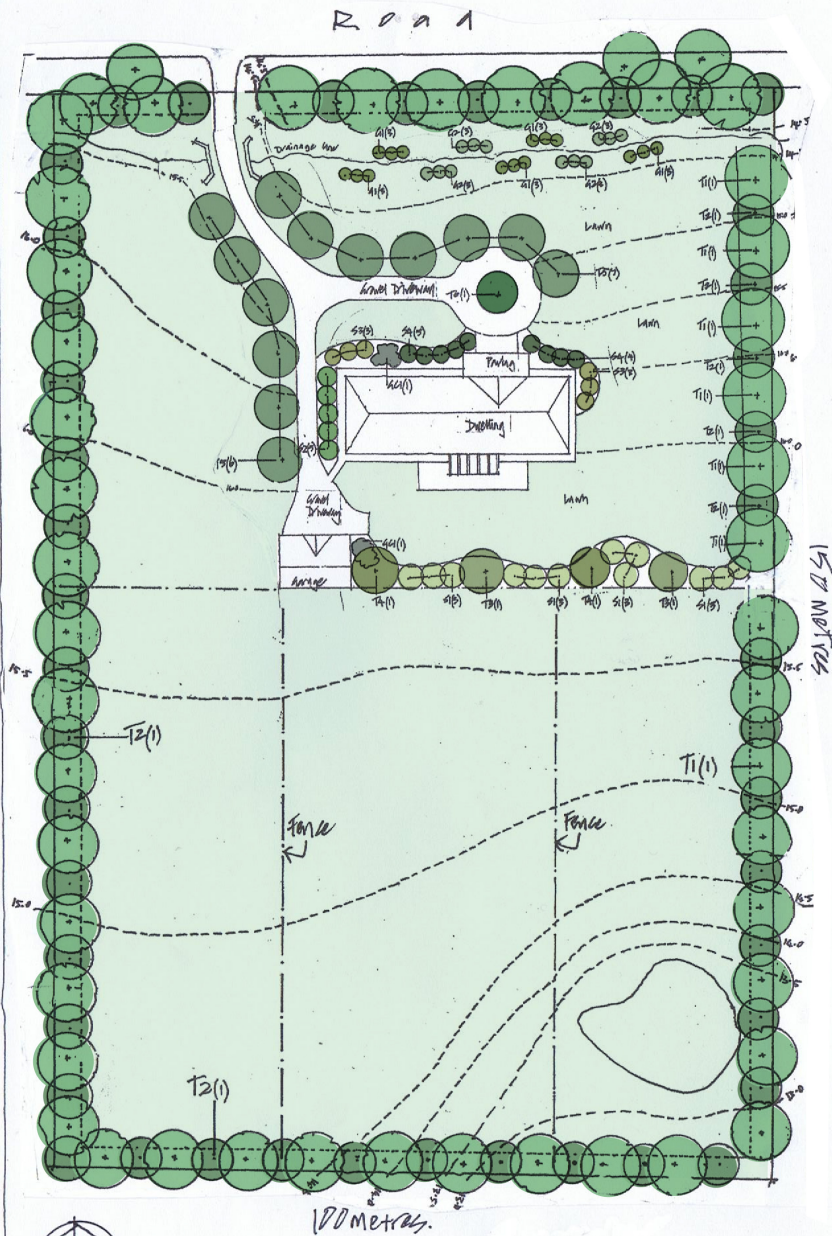
Fertilise beds with complete organic fertiliser

Inspect for disease, and apply control methods promptly

Replace dead plants

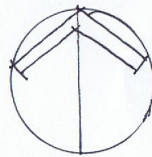
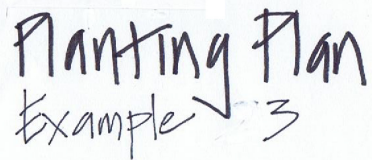
#### Provenance

- Plantings of indigenous species to use plant material sourced from local seed source.
- Refer to Council for a list of suppliers.



Site Plan  
Example 1

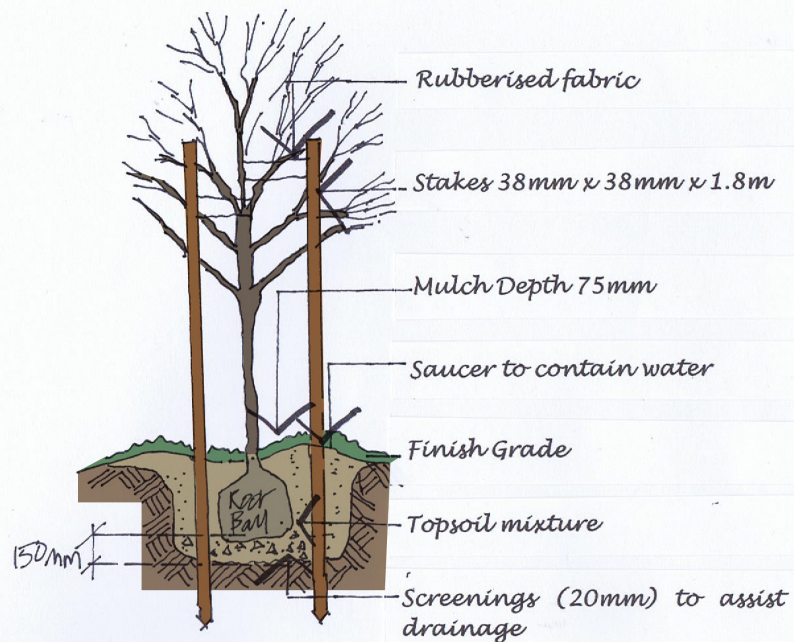




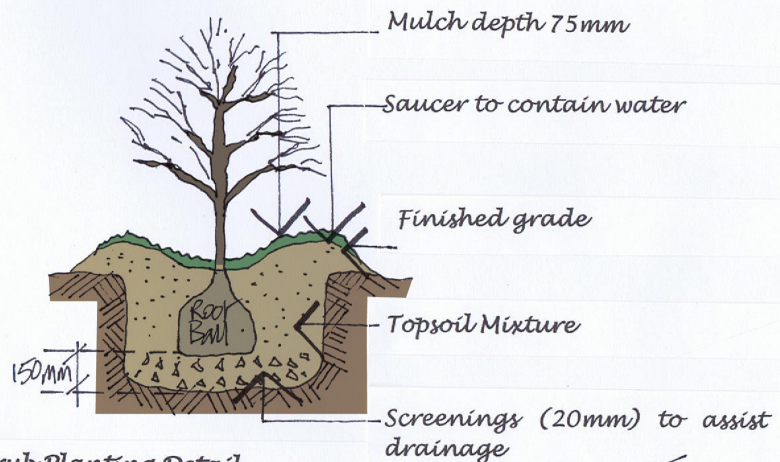
### PLANT LIST

Code	Botanical Name	Common Name	Ult Size	Planting Size	Qty
<b>Larger Trees</b>					
T1	Eucalyptus obliqua	Messmate	15m	75mm Tube	25
T1	Eucalyptus ovata	Swamp gum	15m	75mm Tube	25
<b>Smaller Trees</b>					
T2	Allocasuarina verticillata	Drooping Sheoak	6m	75mm Tube	15
T2	Acacia paradoxa	Hedge Wattle	6m	75mm Tube	15
T2	Leptospermum lanigerum	Woolley Tea Tree	8m	75mm Tube	15
T3	Acer Palmatum	Japanese Maple	6m	1.0m high	2
T4	Fraxinus excelsior "Aurea"	Golden Ash	6m	1.0m high	2
<b>Ornamental Trees</b>					
T5	Betula pendula	Silver Birch	6m	1.0m high	12
T6	Largestroemia indica	Crepe Myrtle	4m	1.0m high	1
<b>Shrubs</b>					
S1	Acacia genistifolia	Spreading Wattle	2m	140mm Pot	18
S2	Grevillea rosmarinifolia	Rosemary Grevillea	2m	140mm Pot	5
S3	Banksia marginata	Silver Banksia	4m	140mm Pot	6
S4	Choisya ternata	Mexican Orange Blossom	2m	140mm Pot	9
<b>Ground Covers</b>					
GC1	Hardenbergia violacea	Purple Coral Pea	2m Spread	75mm tube	2
<b>Drainage Line</b>					
G1	Lomandra longifolia	Spiny Headed Mat Rush	1m	75mm Tube	15
G2	Juncus Procerus	Tall Rush	1m	75mm Tube	12





Tree Planting Detail



Shrub Planting Detail

Example 5  
Planting Details

## Weeds

Pre-planting weed control is useful.

## Mulch

Mulch at a radius of 0.5-1.0 metre around each tree to retain moisture and reduce maintenance.

## Ripping

Deep rip soil to improve soil aeration and infiltration.

## Planting

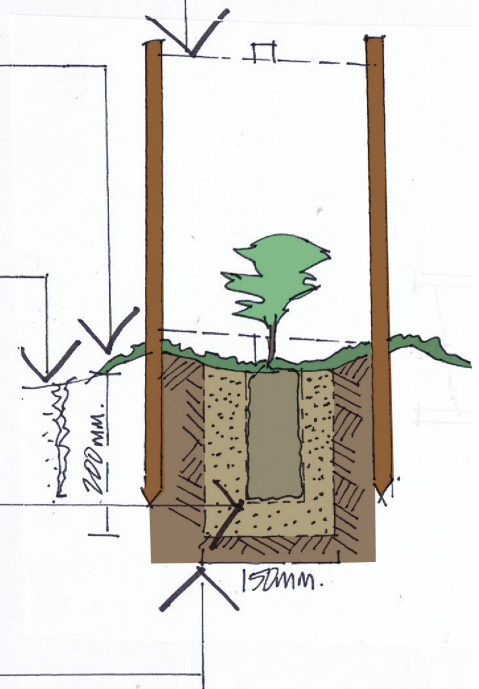
Dig holes prior to removing seedling from its tube or pot  
Soak in water the day before planting.

## Spacing

Position plants as indicated on attached planting plan

## Guards

Use tree guards to protect tubestock during establishment phase, and maintain for a least one year.



Tubestock Planting Detail

Example 6  
Planting  
Details